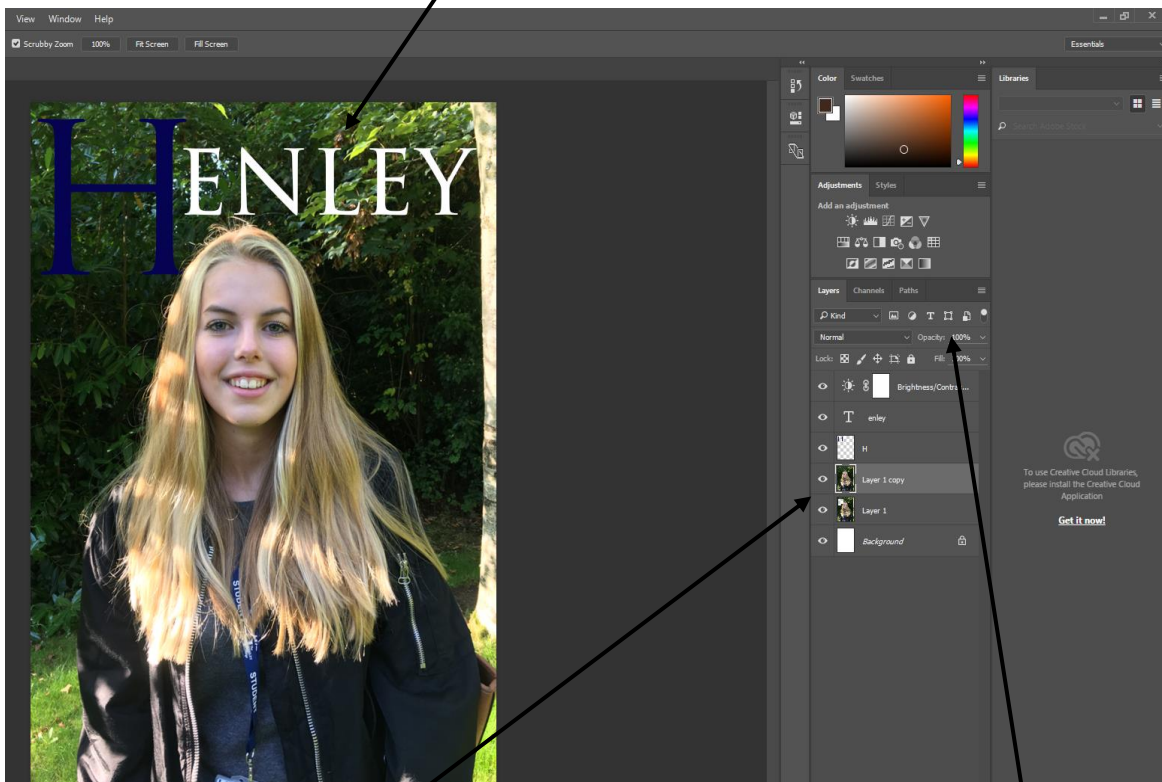


I used the text tool within Photoshop to create the masthead. The 'H' in Henley is separated as I made it larger and a different colour to the rest of the text, this is to make it more prominent. The rest of the text is in white, this is so it is clearly visible against the background and still draws in attention, much like the main image.



I used five layers in order to make my text visible among the main image. I also created a duplicate layer of the main image so I could place the masthead slightly behind the model. This gives the illusion that the model is coming forward out the page, a feature which appears on many magazine front covers.

I also adjusted the brightness and increased it to make the magazine brighter and stand out more as it is targeted towards college students who will be intrigued by bright colours as opposed to a dull magazine. Bright colours also make the magazine appear more positive.